

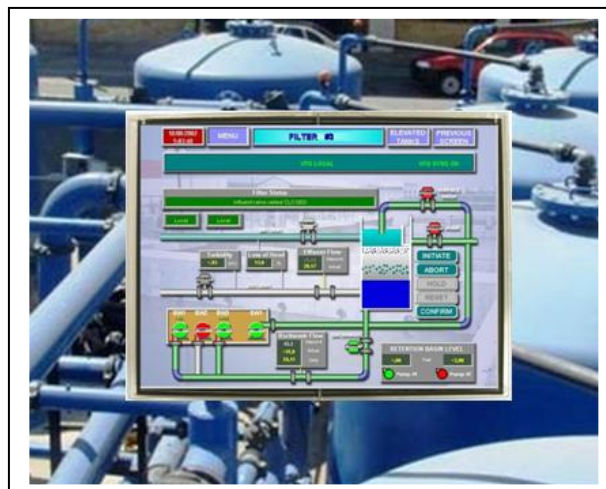
CV170SX01

17.0" XGA TFT LCD

High Bright LED edge lit

Features:

- High bright LED Edge Light
 - 1200 Nits
- Optically Bonded
- Low Power
- Thin Mechanical Package
- Dual Channel LVDS Interface
- Wide Temperature Range
- 6 bit color with R-FRC depth; 16.7 M total colors
- Wide Viewing Angle



CV170SX01 is a color active matrix TFT LCD module using amorphous silicon TFT (thin film transistors) as the active switching devices. This module has a 17.0 inch diagonally measured active area with SXGA resolution (1280 horizontal and 1024 vertical pixel array). The display is equipped with high bright LED edge-lighting, capable of full day light readability at 1200 nits. LED edge lighting ensures high brightness, wide dimming ratios and a very low temperature operation. The display also features optical bonding for very low reflection and a rugged design. The standard configuration comes with 3mm AR coated glass. Other configurations include bondless designs, bonded touch, 6 mm glass, heat or chemical strengthening and EMI filters.

Specifications:

Screen Type (diagonal)	17"	Response Time Tr/Tf (ms)	3.5 / 1.5
Voltage (V)	5	LED Current & Voltage (mA/V)	750 x 2 / 17.5
Display Resolution W*H (dot)	1280 x 1024	B/L Power Consumption (W)	26.25
Dot Pitch W*H (mm)	0.264 x 0.264	High/Low Temp. storage (C)	60 / -20
Viewing Angle (U/D/L/R)	80 / 80 / 85 / 85	High/Low Temp. operation (C)	50 / -10
Luminance Uniformity(%)	85%	Interface	Dual channel LVDS
Brightness (nits)	1200	Weight (g)	2400
Dimensions W*H*D (mm)	358.5 x 296.5 x 16.8	RoHS	Yes
Contrast Ratio	600 : 1	LED Driver Model No.	CV170D01
Standard Optical Bond	3mm AR coated	Lighting Type	Edge lit LED x 2

Mechanical Drawing:

