

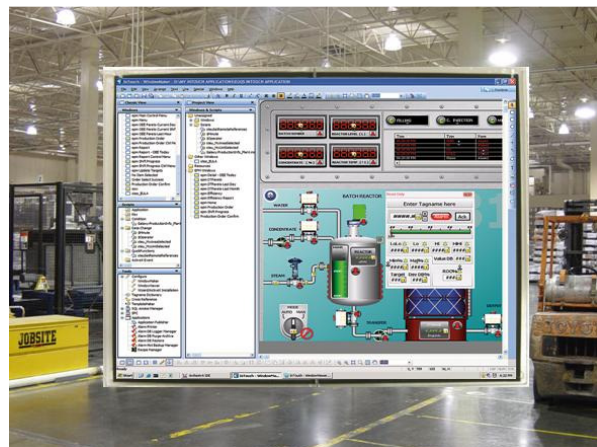
# CV190SX01

## 19.0" SXGA TFT LCD

### High Bright LED edge lit

#### Features:

- High bright LED Edge Light
  - 1200 Nits
- Optically Bonded
- Low Power
- Thin Mechanical Package
- Dual Channel LVDS Interface
- Wide Temperature Range
- 6 bit color with R-FRC depth; 16.7 M total colors
- Wide Viewing Angle



CV190SX01 is a color active matrix TFT LCD module using amorphous silicon TFT (thin film transistors) as the active switching devices. This module has a 19.0 inch diagonally measured active area with SXGA resolution (1280 horizontal and 1024 vertical pixel array). The display is equipped with high bright LED edge-lighting, capable of full day light readability at 1200 nits. LED edge lighting ensures high brightness, wide dimming ratios and a very low temperature operation. The display also features optical bonding for very low reflection and a rugged design. Standard bonding comes with 3mm AR coated glass. Other configurations include non-bonded, AR film, bonded touch, 6 mm glass, heat or chemical strengthening and EMI filters.

#### Specifications:

Screen Type (diagonal)	19"	Response Time Tr/Tf (ms)	5
Voltage (V)	5	LED Current & Voltage (mA/V)	900 x 2 / 17.3
Display Resolution W*H (dot)	1280 x 1024	B/L Power Consumption (W)	31.14
Dot Pitch W*H (mm)	0.294 x 0.294	High/Low Temp. storage (C)	60 / -20
Viewing Angle (U/D/L/R)	85 / 85 / 80 / 80	High/Low Temp. operation (C)	50 / -10
Luminance Uniformity(%)	85%	Interface	Dual channel LVDS
Brightness (nits)	1200	Weight (g)	2700
Dimensions W*H*D (mm)	396.0 x 324.0 x 17.5	RoHS	Yes
Contrast Ratio	1100 : 1	LED Driver Model No.	CV190D01
Standard Optical Bond	3 mm AR coated	Lighting Type	LED edge lit x 2

# Mechanical Drawing:

